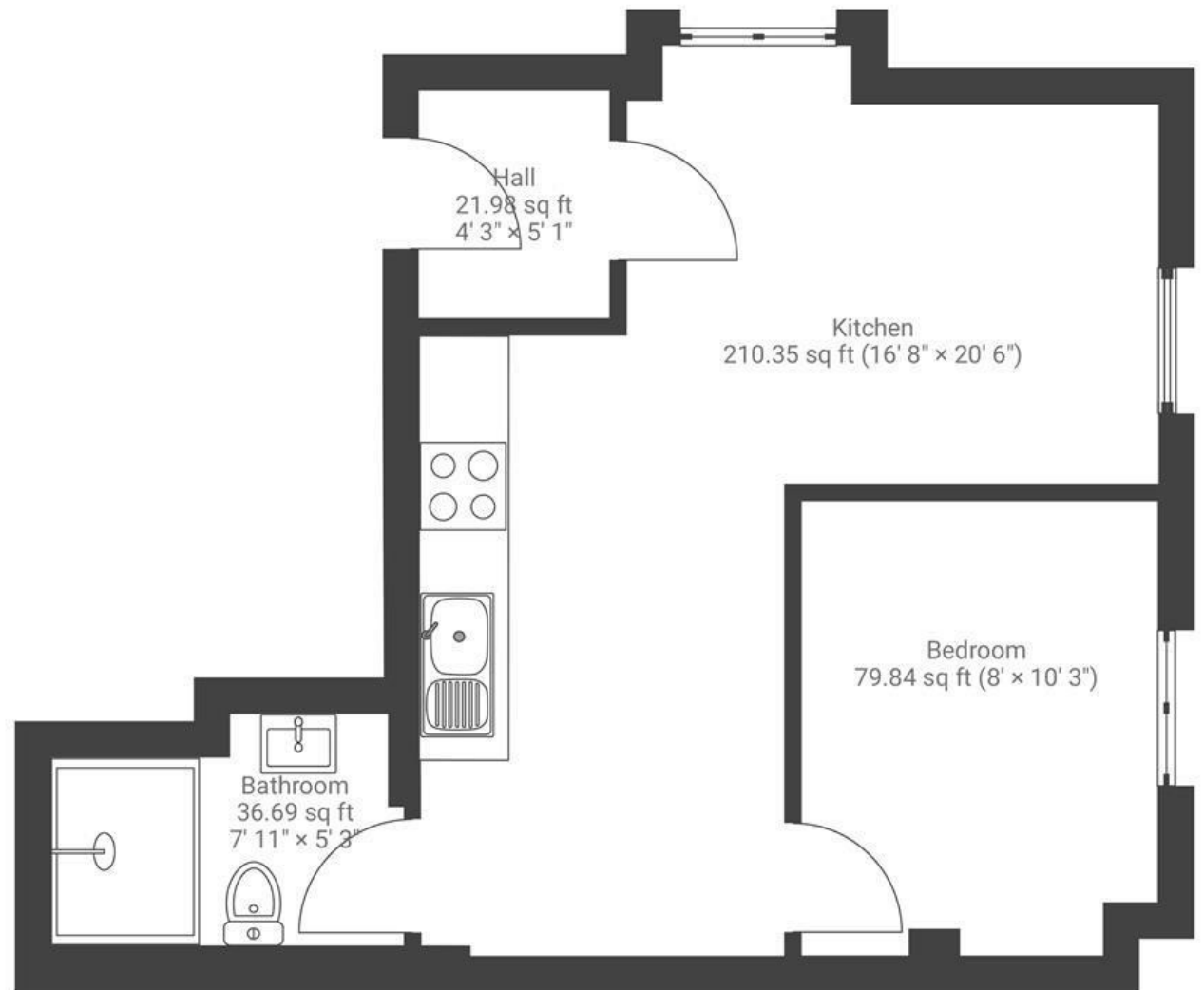


Norfolk House

ST PAULS

APPROXIMATE FLOOR AREA

32.5 SQM / 350 SQFT



~~Boardwalk~~

Norfolk House

NORFOLK AVENUE, BRISTOL



£200,000



1 Bedrooms



BS2 8RQ



1 Bathrooms

"I love the character of my building and it's just so convenient for everything I love. There's some great parks nearby and lots of places to go and have fun both in the centre or on Stokes Croft. I'll really miss it here."

